

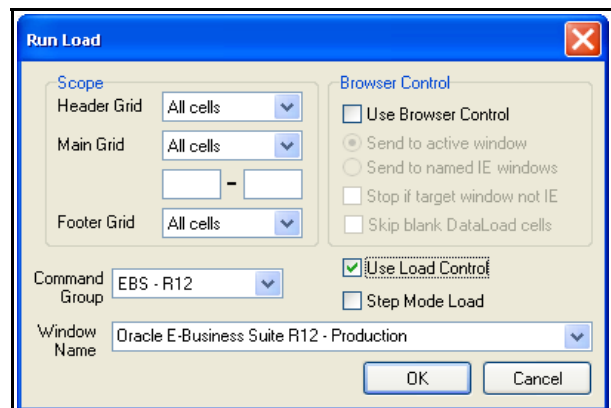
## Enhancing Macro Loads using Load Control

*Load Control is a simple and dramatic way to improve the performance and reliability of Macro Loads. This white paper explains how to use Load Control and what it does.*

Most users' first experience of DataLoad is with Macro loads. These are simple, effective and work in any application. However, they load data at a fixed speed and have no feedback from the target application so can not respond to what that application is doing. The simplicity of Macro loads can become the limiting factor, that is users find Macro loads so effective that they use them to load more and more data but go beyond what can be realistically achieved with a Macro load.

Load Control was introduced to fix this problem. It continually monitors what the target application is doing and adjusts the load accordingly. When the target application is busy and has yet to process the last keystroke, mouse click or paste command, DataLoad will wait. It will only process the next cell when the target application has finished with the previous one. This enables DataLoad to dynamically control the speed of the load, always sending data as fast as possible but never loading faster than can be handled by the target application. Load Control works with all target applications including native Windows applications and those that use Java or are browser-based. Many DataLoad users work with Oracle E-Business Suite or other ERP & CRM applications and Load Control will work with both the "core/professional" forms and Self Service browser forms (however, see Browser Control to maximise performance and reliability in browsers).

Using Load Control is extremely simple. The Run Load window appears when the load is started and this contains a check box called "Use Load Control". Ticking that checkbox activates Load Control and DataLoad then handles everything else – nothing further is required from the user. After enabling Load Control the load should still work as expected although this should be tested.



Having proved that the load works correctly with Load Control enabled the DataLoad Delays can be reduced. These can normally all be set to 0 in the Delays window and the \*Sln delays removed entirely from the spreadsheet. Having removed the delays DataLoad will manage the progress of the load using Load Control. There are certain circumstances in which delays may still be required. The most common is when a form is opening or closing because then actions may be lost "between" the forms and Load Control can't detect that. This is an operating system limitation but clearly the majority of a load won't be affected by this. Where it is found Load Control can't manage the load, such as where forms open and close, a delay should be inserted and the \*Sln command is the ideal way to do this so the delay occurs exactly where it is needed.

Load Control is so simple and effective it should be used with all Macro loads to maximise performance and reliability, especially as it does this without adding complexity.

DataLoad is unique in providing a comprehensive suite of options for loading data and config to Oracle E-Business Suite & other applications. With thousands of users in almost 100 countries it is the world's favourite data loading tool.